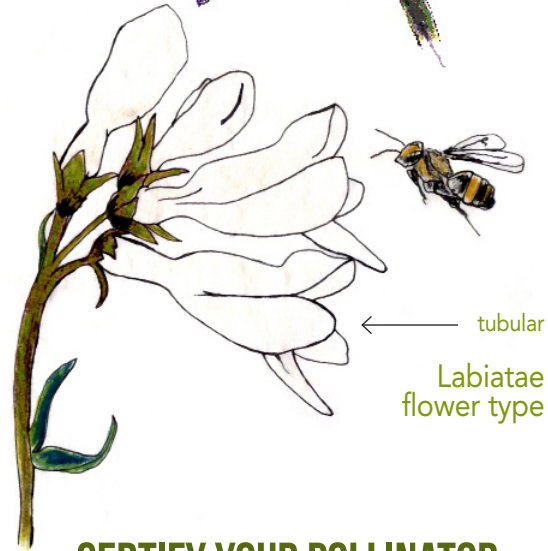
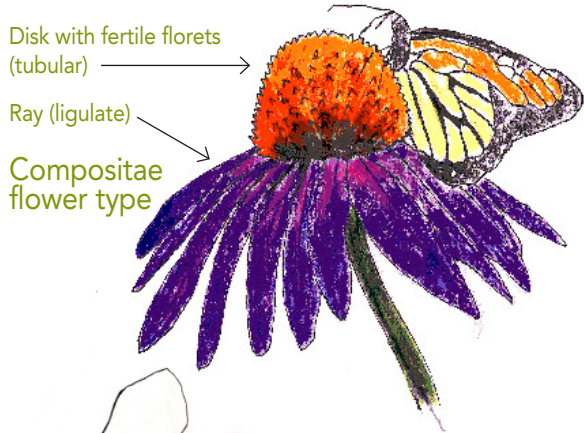


TYPES OF FLOWERS



CERTIFY YOUR POLLINATOR FRIENDLY GARDEN!

<http://ento.psu.edu/pollinators/public-outreach/cert>

Penn State Extension Master Gardeners of Philadelphia County are volunteers trained by instructors from within the College of Agricultural Sciences. Master Gardeners help Penn State Extension serve the public in areas of horticulture and environmental stewardship by answering questions, teaching groups, working with beautification projects, and maintaining demonstration gardens.

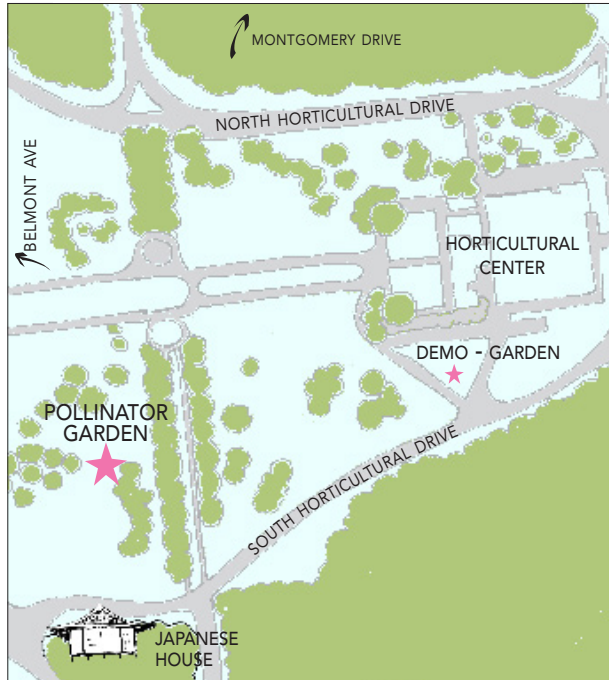
For more information about the Penn State Master Gardeners, please email aeh22@psu.edu

An **OUTREACH** program of the College of Agricultural Sciences

FAIRMOUNT PARK HORTICULTURAL CENTER
100 North Horticultural Drive • Philadelphia, PA 19131



PHILADELPHIA
PARKS & RECREATION



HAVE A GARDENING QUESTION?

Call: 267.314.8711

Email: philadelphiamg@psu.edu, Instagram: [phila_mg](#)
with "Hotline" as the subject line

Visit our blog:

www.philadelphiacountymastergardeners.blogspot.com

For more information, visit:

www.extension.psu.edu/philadelphia/programs/master-gardener

Brochure Design by Andrea Lewandowski

The Pennsylvania State University is committed to the policy that all persons shall have equal access to programs, facilities, admissions and employment without regard to personal characteristics not related to ability, performance or qualifications as determined by university policy or by state or federal authorities. The Pennsylvania State University does not discriminate against any person because of age, ancestry, color, disability or handicap, national origin, race religious creed, sex, sexual orientation or veteran status. Direct all inquiries regarding the nondiscrimination policy to the Affirmative Action Director, Pennsylvania State University, 201 Willard Building, University Park, PA 16802-2801; T (814) 863-0471; TDD (814)865-317



PennState
College of Agricultural Sciences



PennState Extension

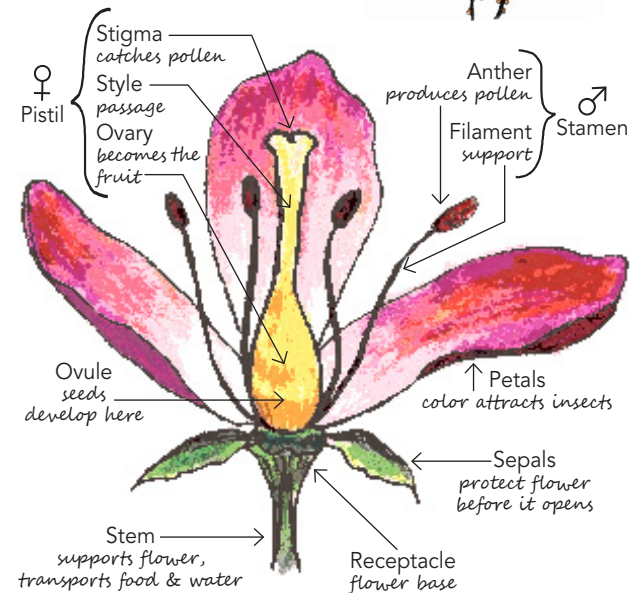
PHILADELPHIA
MASTER GARDENERS

welcome you to the

POLLINATOR Garden



The Pollinator carries pollen from the male parts of a flower to the female parts



THE PENN STATE CENTER
ENGAGING PHILADELPHIA

675 Sansom Street • Philadelphia, PA 19106
215-471-2200

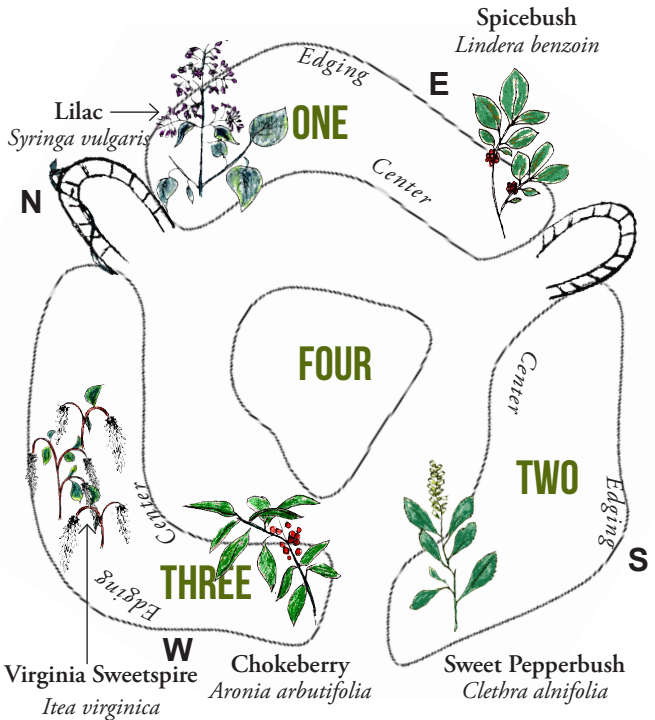
THE POLLINATOR GARDEN

Penn State Master Gardeners created this Pollinator Garden to demonstrate a high quality plant, insect and bird habitat that sustains all three of these entities in their life cycles. Each plant has been selected because it provides food for a range of insects.



In any garden, consider including host plants such as milkweeds, parsley, fennel and dill to support the larval stage of Monarch butterflies (milkweeds) and Black Swallowtail butterflies (the three herbs). Annuals such as *Cosmos* and species of blue *Salvias* add summer and fall interest in addition to attracting bees & butterflies.

This garden is a work in progress, annually evolving and changing. The opposite list highlights most of the plants of the garden.



KEY	N = Native Plant	* Appears in other beds
	SH - Needs Shade	○ Color Of Flower

BED ONE

- Short Perennials: 2" to 8"**
- Creeping Phlox, *Phlox stolonifera* SH (N) Spring
 - Green & Gold, *Chrysogonum virginianum** SH (N) Spring
 - Foam Flower, *Tiarella cordifolia* SH (N) Spring
 - Golden Ragwort, *Packera aurea* * SH (N) Spring
 - Indian Pink, *Spigelia marilandica* SH (N) Spring
 - Cranesbill, *Geranium maculatum* SH (N) Spring
 - Crested Iris, *Iris cristata* SH (N) Spring
 - Coral Bells, *Heuchera villosa* SH (N) Spring
 - Blue Eyed Grass, *Syrinchium angustifolium* 'Lucerne' (N) Spring
 - Wild Petunia, *Ruellia humilis* (N) Summer
 - Fleabane, *Erigeron pulchellus* 'Lynnhaven' (N) Spring

- Mid Size Perennials: 12" to 28"**
- Columbine, *Aquilegia canadensis* SH (N) Spring
 - Bee Balm, *Monarda didyma* * (N) Summer
 - Bergamot, *Monarda fistulosa* (N) Summer
 - Sneezeweed, *Helenium autumnale* (N) Summer
 - Obedient Plant, *Physostegia virginiana* (N) Summer
 - Switch Grass, *Panicum virgatum* (N) Summer
 - Mountain Mint, *Pycnanthemum muticum* (N) Summer
 - Button Snakeroot, *Eryngium yuccifolium* (N) Summer
 - Great Blue Lobelia, *Lobelia siphilitica* SH (N) Late Sum
 - Cardinal Flower, *Lobelia cardinalis* SH (N) Late Sum
 - Bluemist Flower, *Conoclinium coelestinum** (N) Fall

BED TWO

- Short Perennials: 4" to 10"**
- Spiderwort, *Tradescantia virginia* * SH (N) Spring
 - Beardtongue, *Penstemon digitalis* 'Husker Red' * (N) Spring
 - Wild Pink, *Silene caroliniana* (N) Spring

- Mid Size Perennials: 24" to 48"**
- Blazing Star, *Liatris spicata* (N) Summer
 - Black Eyed Susan, *Rudbeckia fulgida* * (N) Summer
 - Garden Phlox, *Phlox paniculata* (N) Summer
 - Anise Hyssop, *Agastache foeniculum* spp * (N) Summer
 - Swamp Milkweed, *Asclepias incarnata* (N) Summer
 - Aster, *oblongifolius* 'Raydon's Favorite' * (N) Fall
 - Aster, *Symphotrichum novae-angliae* 'Purple Dome' * (N) Fall

- Tall Perennials: 6' to 8'**
- Cutleaf Coneflower, *Rudbeckia laciniata* (N) Summer

Bloom time

BED THREE

- Short Perennials: 6" to 12"**
- Dutchman Breeches, *Dicentra cucullaria* SH (N) Spring
 - False Solomon Seal, *Maianthemum racemosum* SH (N) Spring
 - Nodding Onion, *Allium cernuum* (N) Spring
 - Stokes' Aster, *Stokesia laevis* * (N) Spring
 - Golden Alexander, *Zizia aurea* (N) Spring
 - Short Goldenrod, *Solidago sphacelata* * (N) Sum/Fall
 - Butterfly Weed, *Asclepias tuberosa* * (N) Summer
 - Short Ironweed, *Vernonia lettermani* (N) Fall

- Tall Perennials: 3' to 12'**
- Wild Senna, *Senna marilandica* (N) Summer
 - Purple Vervain, *Verbena bonariensis* * (N) Summer
 - Purple Coneflower, *Echinacea purpurea* * (N) Summer
 - Oxeye Sunflower, *Heliopsis helianthoides* * (N) Summer
 - New York Ironweed, *Vernonia noveboracensis* * (N) Summer
 - Joe Pye Weed, *Eutrochium fistulosum* * (N) Summer
 - Perennial Sunflower, *Helianthus 'Lemon Queen'* * (N) Summer
 - Tall Goldenrod, *Solidago canadensis* (N) Fall

BED FOUR

- Mid Size Perennials: 20" to 36"**
- Bluestar, *Amsonia hubrechtii* * (N) Spring
 - Blue False Indigo, *Baptisia australis* * (N) Spring
 - Tickseed, *Coreopsis verticillata* (N) Summer
 - Common Milkweed, *Asclepias syriaca* (N) Summer
 - Culver's Root, *Veronicastrum virginicum* (N) Summer

- Vines**
- Native Honeysuckle, *Lonicera sempervirens* (N) Spr/Sum
 - Climbing Hydrangea, *Decumaria barbara* * (N) Summer

- Shrubs**
- Spicebush, *Lindera benzoin* * (N) Early Spring
 - Serviceberry, *Amelanchier canadensis* (N) Early Spring
 - Red Twig Dogwood, *Cornus sericea* (N) Spring
 - Possomhaw, *Viburnum nudum* (N) Spring
 - Chokeberry, *Aronia arbutifolia* 'Brillantissima' (N) Spring
 - Virginia Sweetspire, *Itea virginica* 'Little Henry' (N) Spring
 - Meadowsweet, *Spirea latifolia* (N) Summer
 - Golden St. Johnswort, *Hypericum frondosum* * (N) Summer
 - Bluebeard, *Caryopteris x clandonensis* (N) Late Sum

Bloom time